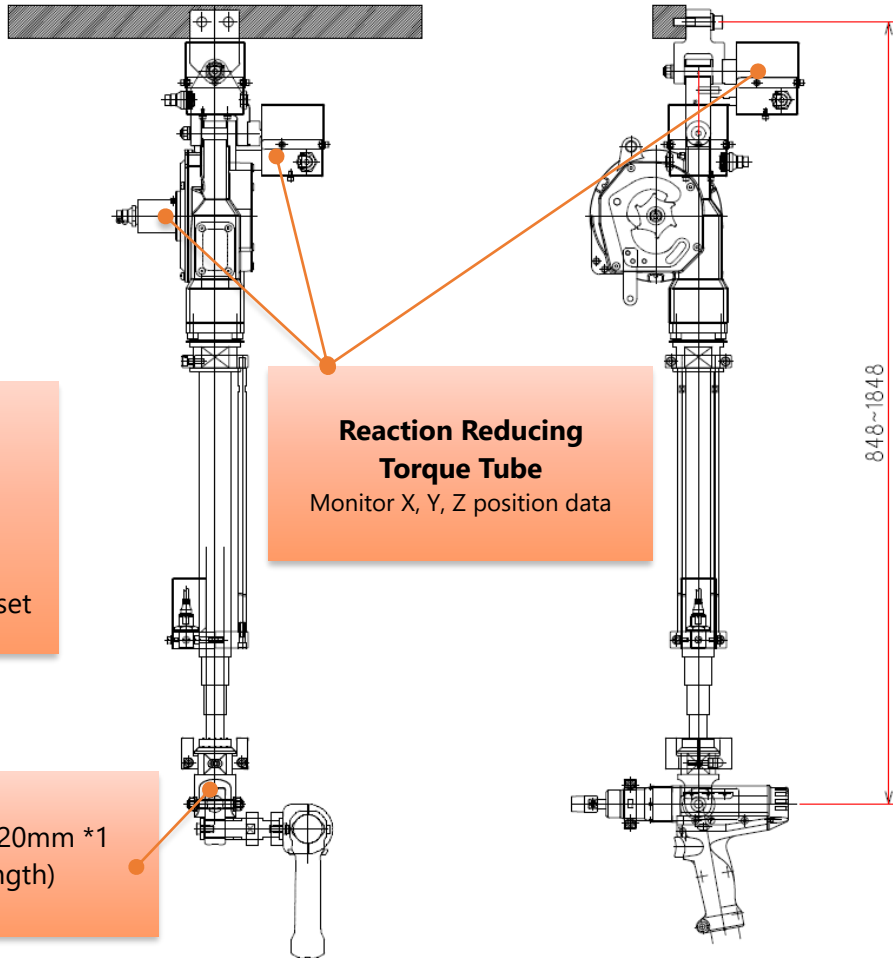


# Torque Tube Positioning System **NEW**

- Poka-yoke the tightening procedure and its position / Poka-yoke 2 positions of before and during the tightening
- Poka-yoke the cross thread
- Errors in coordinate data could be checked on the user interface



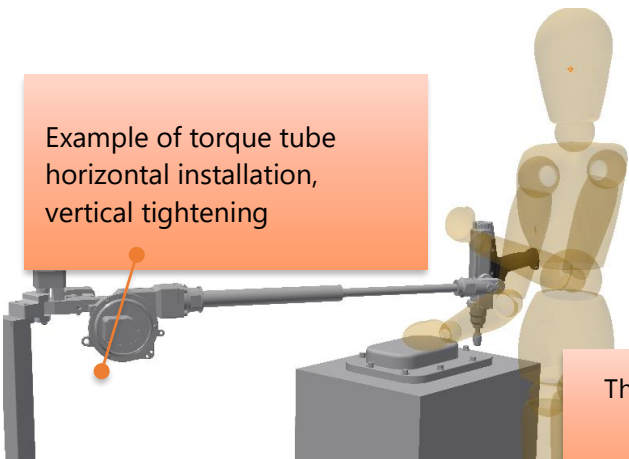
Controller: PSA-C1  
 Program Quantity:  
 WORK : 64  
 Position Registration : 40  
 Total of 2560 points could be set



**Reaction Reducing  
 Torque Tube**  
 Monitor X, Y, Z position data

Minimum detection pitch: 20mm \*1  
 (At 1000mm stroke length)

Example of torque tube  
 horizontal installation,  
 vertical tightening



No.	名称	設定値
1	ポカヨケ数	4
2	締め締	1: 盤締め
3	戻り戻	0
4	戻り戻実行	0: しない

No.	名称	ポカ中心 1	ポカ中心 2	ポカ中心 3	ポカ中心 4
1	ポカ中心 X	20.0	60.0	30.0	70.0
2	ポカ中心 Y	30.0	30.0	70.0	70.0
3	ポカ中心 Z	0.0	0.0	0.0	0.0
4	締め戻り位置 前位置	7	10	8	7
5	締め戻り位置 後位置	100	100	100	100
6	締め戻り位置 前位置	15	15	15	12
7	締め戻り位置 後位置	100	100	100	100
8	締め戻り位置 番号	1	1	1	1
9	使用ソフト番号	0	0	0	0

The complex position information is easy to understand.

The user interface is easy to set up!

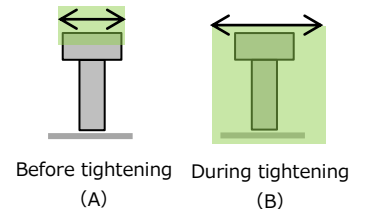
\*1: Minimum effective detection is set by taking into account mechanical rattling of tool holders, etc. and repetitive positional accuracy.

## Poka-yoke 2 positions of before and during the tightening

It is possible to poka-yoke the position to be known before operate and the position detection during tightening to prevent inadvertent work. (Tightening an adjacent bolt before the tightening is completed)

For example, severe position setting (A) for the position before tightening allows for severe position control. Rough positioning during tightening allows for socket runout prior to bolt fitting.

No.	Description	Position 1	Position 2	Position 3	Position 4	Position 5
1	Position X	0.0	0.0	0.0	0.0	0.0
2	Position Y	0.0	0.0	0.0	0.0	0.0
3	Position Z	0.0	0.0	0.0	0.0	0.0
4	XY Allowance Range Before Fastening	10	10	10	10	10
5	Z Allowance Range Before Fastening	100	100	100	100	100
6	XY Allowance Range During Fastening	10	10	10	10	10
7	Z Allowance Range During Fastening	100	100	100	100	100
8	Fastening Parameter Number	1	1	1	1	1



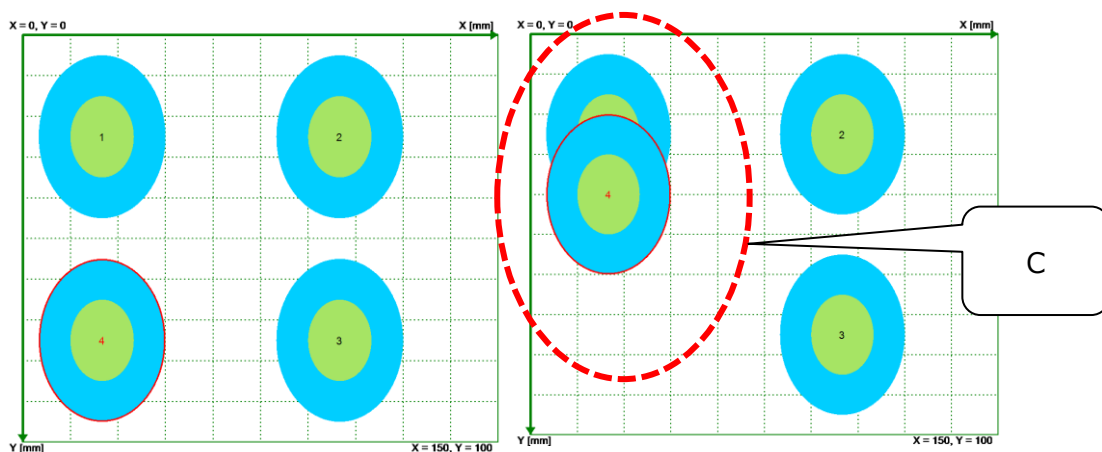
## Poka-yoke the cross thread

The method of horizontal and vertical tightening of workpieces is a task that requires skilled work. By using the X, Y and Z coordinate data from this positioning system, it is possible to poka-yoke the bolt in an oblique entry position.



## Errors in coordinate data could be confirmed on the user interface

It is possible to confirm the overlap errors (C) in tightening coordinate data (2-axis coordinates) on the user interface.



## Line Up

Part Number	Max. Torque [Nm]	Stroke Length [mm]	HandWeight [kg]	Weight [kg]
TTR060-4100-02-P-X23001	60	1,000	0.5~2.0	5.5
TTR060-4100-04-P-X23004			2.0~4.0	
TTR060-4100-06-P-X23005			4.0~6.0	
TTR200-4100-05-P-X24001	200	1,000	3.0~5.0	6.0
TTR200-4100-07-P-X24002			5.0~7.0	

NOTE) To enable positioning functionality, the torque tube must be fixed type.

Specifications and designs of the products are subject to change without notice due to improvements.


**DAI-ICHI DENTSU LTD.**

<https://www.daiichi-dentsu.co.jp>  
[ddksales@daiichi-dentsu.co.jp](mailto:ddksales@daiichi-dentsu.co.jp)

Head office: 1-54-1, Shimoishihara, Chofu-City,  
 Tokyo 182-0034, Japan  
 Phone: 81-42-440-1465  
 Fax: 81-42-440-1436

Kani Plant: 690-1, Omori, Kani-City,  
 Gifu, 509-0238, Japan  
 Phone: 81-574-62-5865  
 FAX: 81-574-62-3523