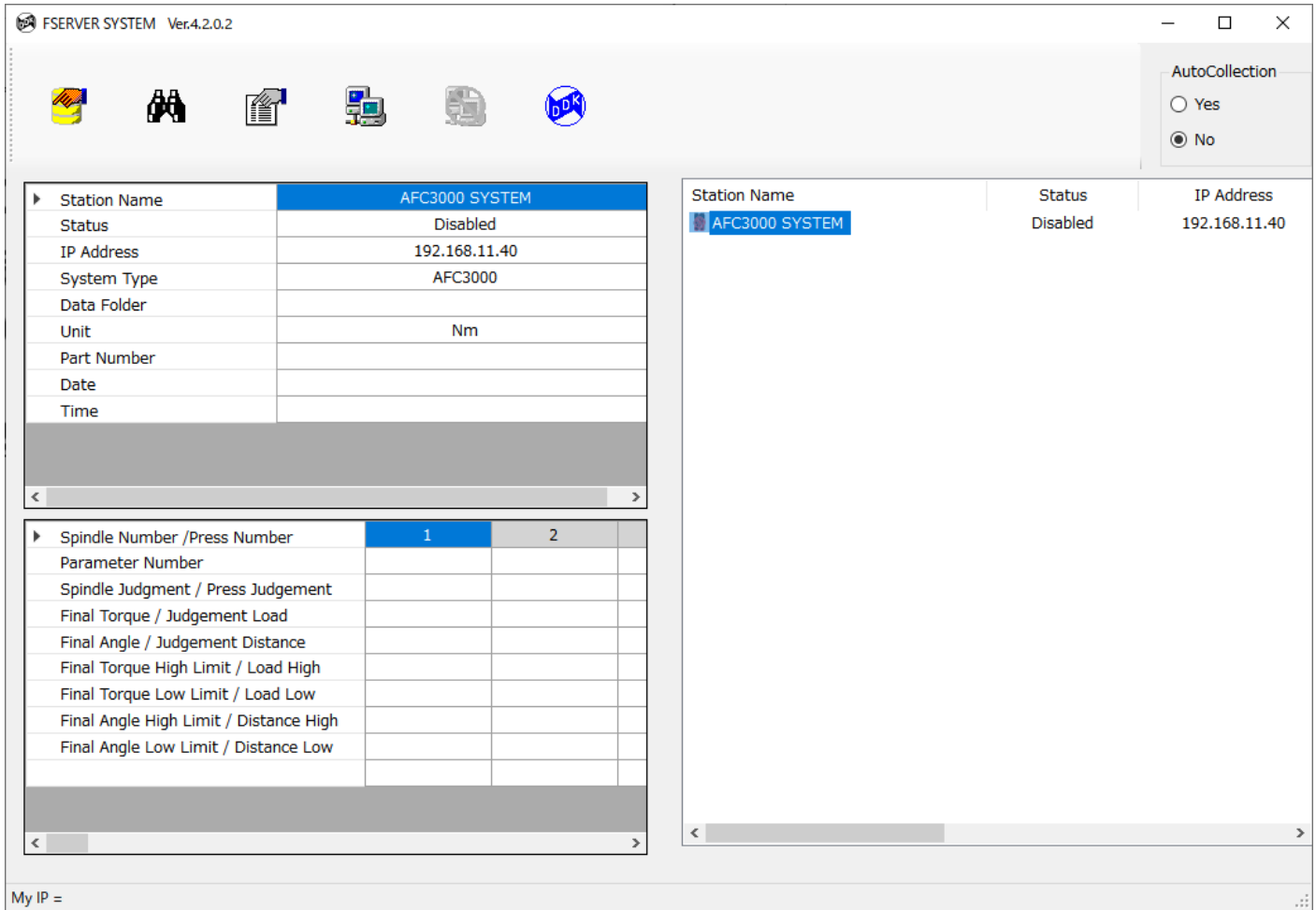


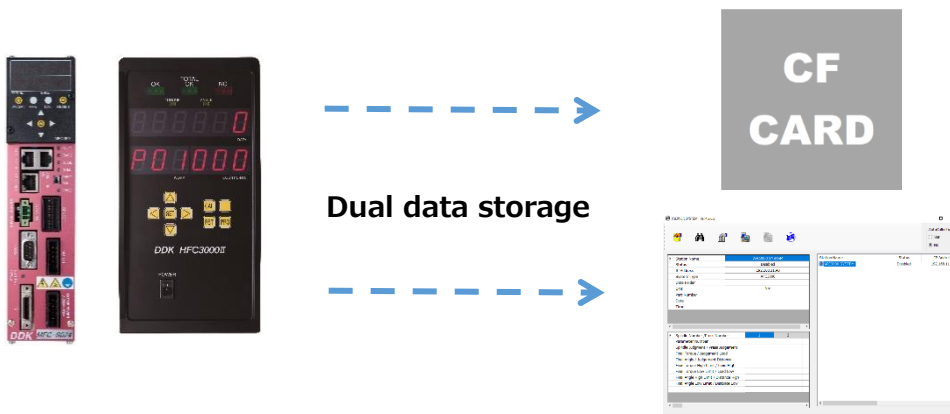
Simple Data Logger Application **FSERVER NEW**



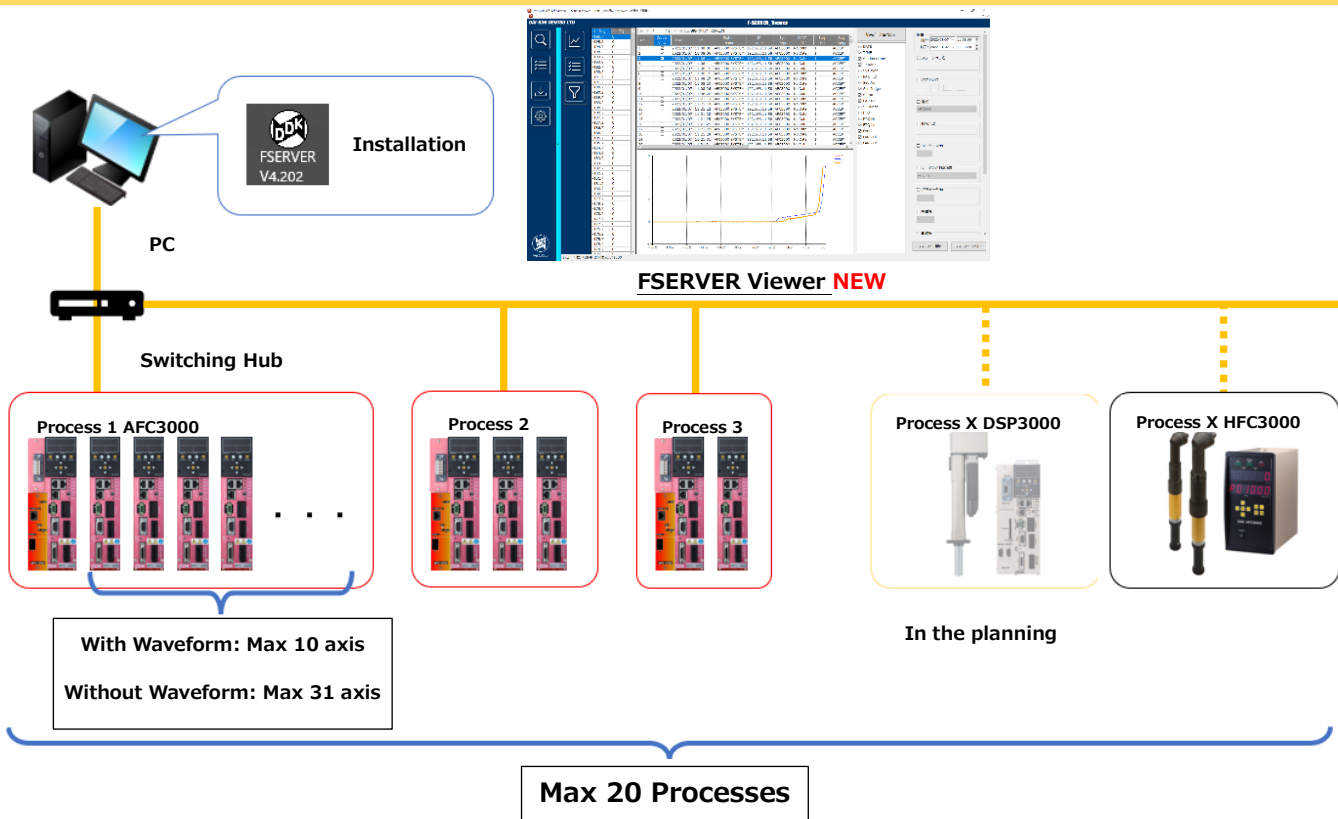
Feature

Double security measures for data storage.

It is possible to save to a CF card in the communication unit (such as MFC-CFEA) while saving to the server or PC. Two systems of storage allow to safely keep important data.



System configuration



Specification

Items	Contents
Data Logger Items	Result (Date, Axis No., Parameter No., Judgment, Torque/Load Value, Angle/Distance Value, Upper/Lower Torque/Load Limit, Upper/Lower Angle/Distance Limit) Tightening Waveform Data ※Angle (200° fixed)×Torque NEW
Number of Connectable Devices	20 Devices
Connection Type	Ethernet 100 BASE-TX
File Format	TEXT, SQLite database format NEW
Protocol	TCP/IP
Recommended PC Specs	OS: Windows 10 (English, Japanese) CPU: Intel(R) Corei5-6200U more than enough Memory : 8GB Drive Unit : CR-ROM ※Required only during installation LAN : 1000Base-T
FERVER System	From Ver.4.202
FSERVER Viewer	From Ver.1.005
Supported Models	AFC3000 MFC-S008/024/060/120 (From Ver.2.096) and MFC-CFEA (From Ver.4.09), HFC3000 HFC-B024A-□□-□□-□□-EA(-CE) (Scheduled to be released soon)

NOTE) Specifications and designs of the products are subject to change without notice due to improvements.



<https://www.daiichi-dentsu.co.jp>
ddksales@daiichi-dentsu.co.jp

Head office: 1-54-1, Shimoishihara, Chofu-City,
 Tokyo 182-0034, Japan
 Phone: 81-42-440-1465
 Fax: 81-42-440-1436

Kani Plant: 690-1, Omori, Kani-City,
 Gifu, 509-0238, Japan
 Phone: 81-574-62-5865
 FAX: 81-574-62-3523